

HOMELESSNESS IN TAMPA/HILLSBOROUGH COUNTY COC

The Department of Housing and Urban Development requires communities to conduct a point-in-time count of our homeless neighbors, and volunteers in our CoC were able to complete on February 27th, 2025, sampling parts of the county and extrapolate the number of homeless neighbors.



2025 PIT COUNT



950 Sheltered

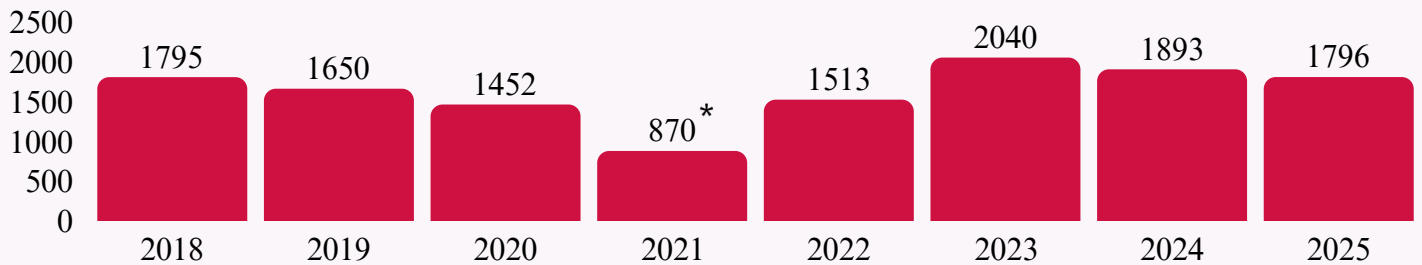


1796 Total

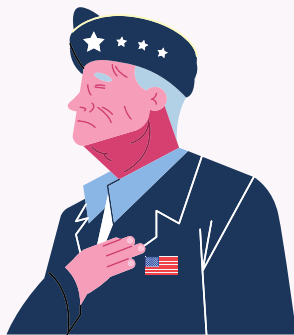


846 Unsheltered

TOTAL HOMELESSNESS



SUBPOPULATIONS



139 Veterans



433 Chronically Homeless

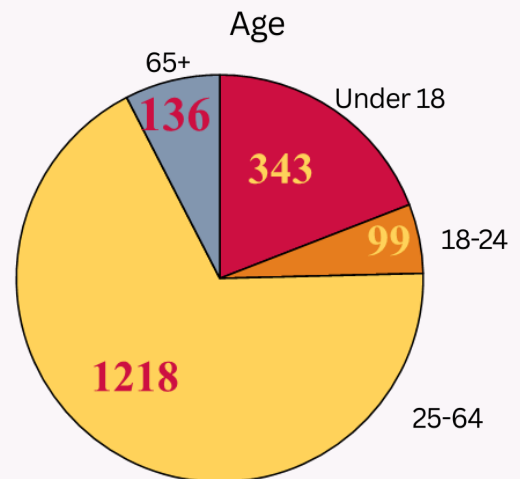


181 Families

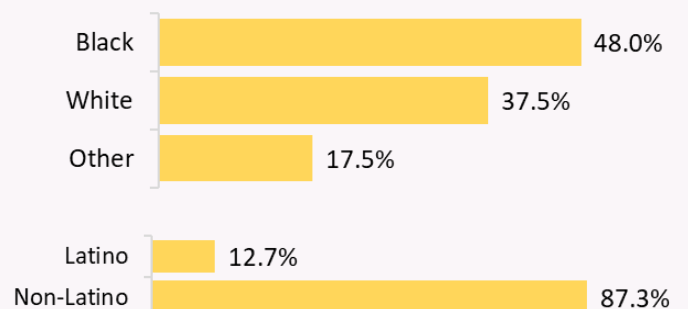


53 Youth/Young Adults (YYA)

DEMOGRAPHICS



Race and Ethnicity



*There was no unsheltered count in 2021 due to the COVID-19 pandemic.

Unsheltered Surveys completed By Zipcode

Trends



27.93% of adults saw an increase in income this year.

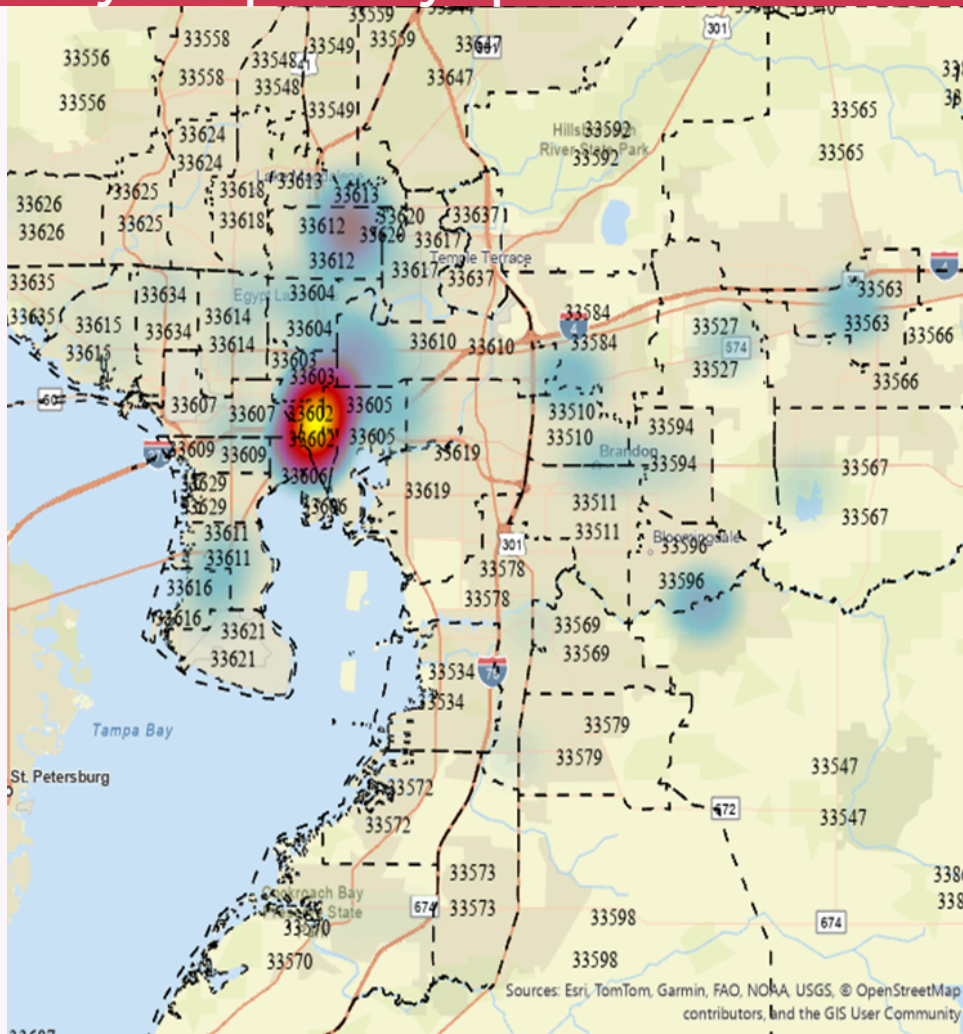
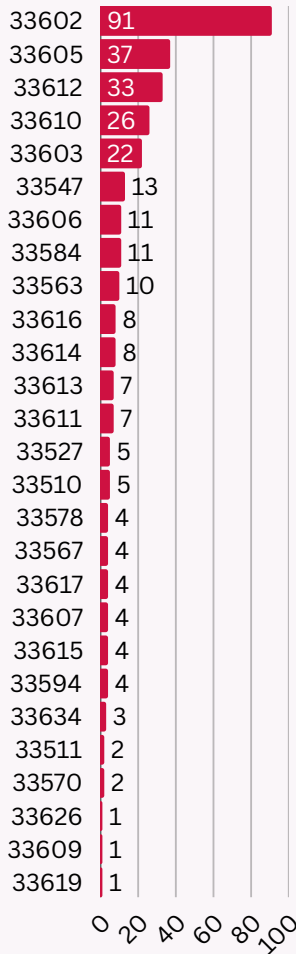


The number of unsheltered youth/young adults **decreased by 8.6 %** since 2019.



18% decrease in seniors (65+) from last year.

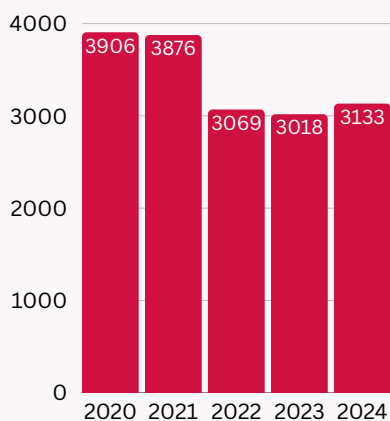
Follow the QR code to Volunteer!



Making Homelessness Rare, Brief, and Non-Recurring*

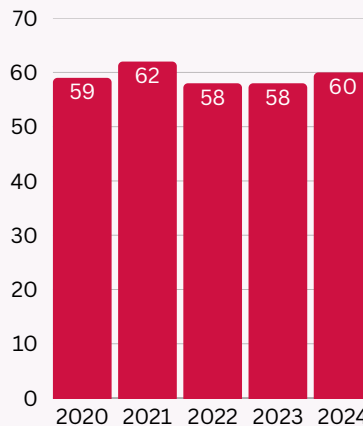
Rare

Number of people experiencing homelessness for the first time



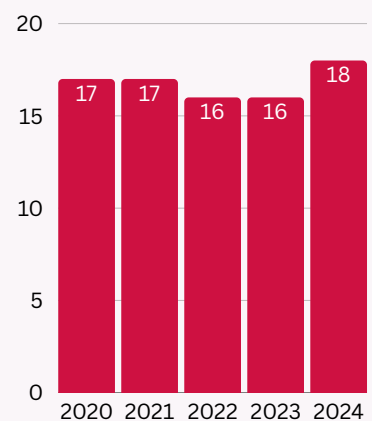
Brief

Median number of days in shelter



Non-Recurring

Percent of people returning to homelessness within 24 months



THHI is funded by:



FLORIDA DEPARTMENT OF CHILDREN AND FAMILIES
MYFLFAMILIES.COM



Hillsborough County Florida



City of Tampa Florida



Children's Board
HILLSBOROUGH COUNTY
www.ChildrensBoard.org